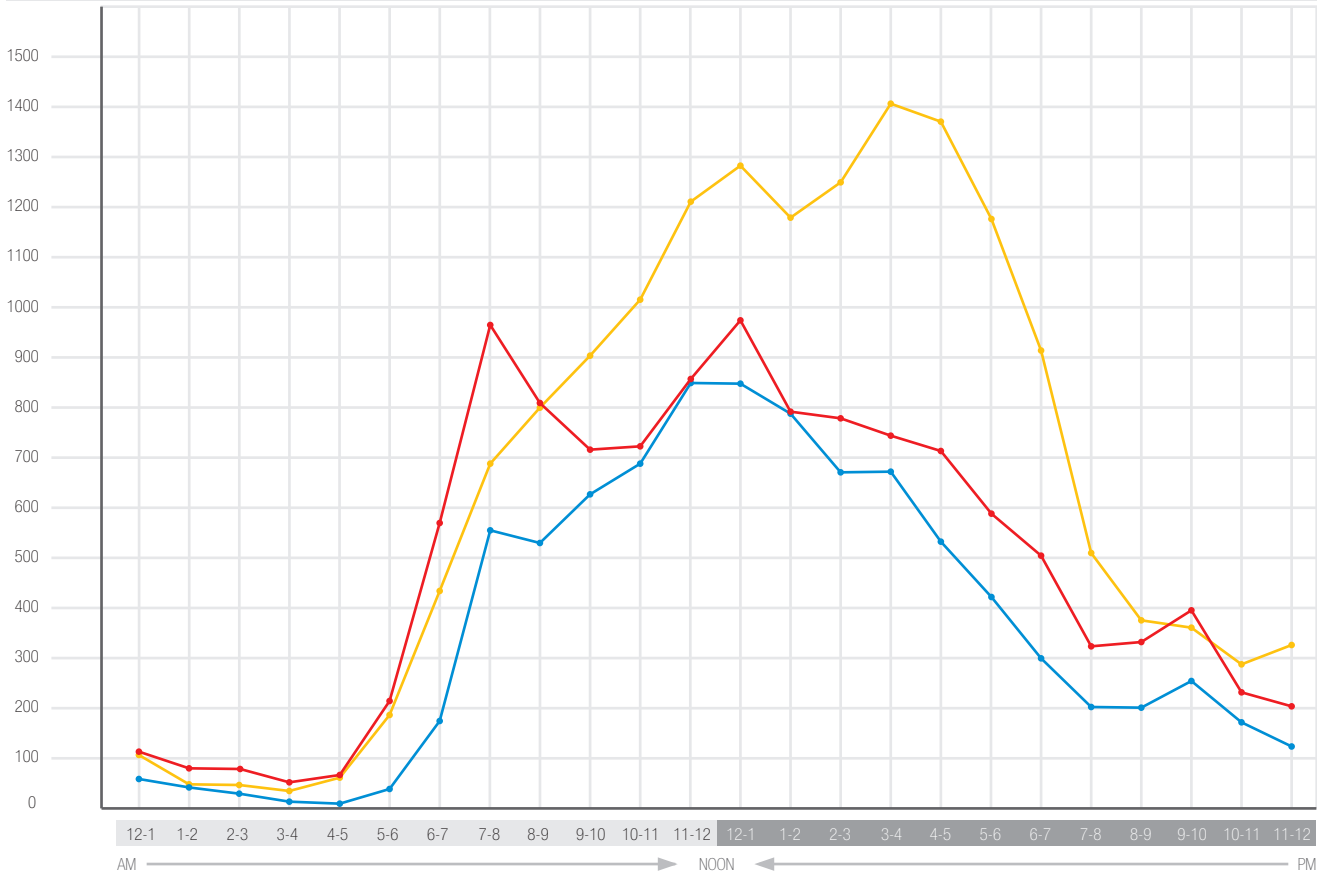


Intersection of Palafox & Garden Streets (Vehicular Count) — November 2007 — 12:00AM through 11:59 PM

Intersection Totals 293 187 158 101 141 436 1182 2208 2143 2246 2419 2929 3097 2749 2699 2822 2629 2182 1722 1034 906 1022 701 666 **36,672 total**

MAP KEY

- Westbound
- Eastbound
- Southbound



12-1 1-2 2-3 3-4 4-5 5-6 6-7 7-8 8-9 9-10 10-11 11-12 12-1 1-2 2-3 3-4 4-5 5-6 6-7 7-8 8-9 9-10 10-11 11-12
AM ← NOON → PM

Time	APPROACH				Intersection Total
	Westbound	Eastbound	Northbound	Southbound	
12:00 - 12:59	117	107		69	293
1:00 - 1:59	80	56		51	187
2:00 - 2:59	78	51		29	158
3:00 - 3:59	48	41		12	101
4:00 - 4:59	69	63		9	141
5:00 - 5:59	211	184		41	436
6:00 - 6:59	588	420		174	1182
7:00 - 7:59	963	690		555	2208
8:00 - 8:59	807	800		536	2143
9:00 - 9:59	712	909		625	2246
10:00 - 10:59	719	1010		690	2419
11:00 - 11:59	863	1217		849	2929
12:00 - 12:59	976	1273		848	3097
1:00 - 1:59	796	1175		778	2749
2:00 - 2:59	775	1254		670	2699
3:00 - 3:59	748	1403		671	2822
4:00 - 4:59	719	1372		538	2629
5:00 - 5:59	591	1174		417	2182
6:00 - 6:59	505	914		303	1722
7:00 - 7:59	323	510		201	1034
8:00 - 8:59	330	377		199	906
9:00 - 9:59	399	368		255	1022
10:00 - 10:59	232	296		173	701
11:00 - 11:59	209	325		132	666
TOTAL					36,672

