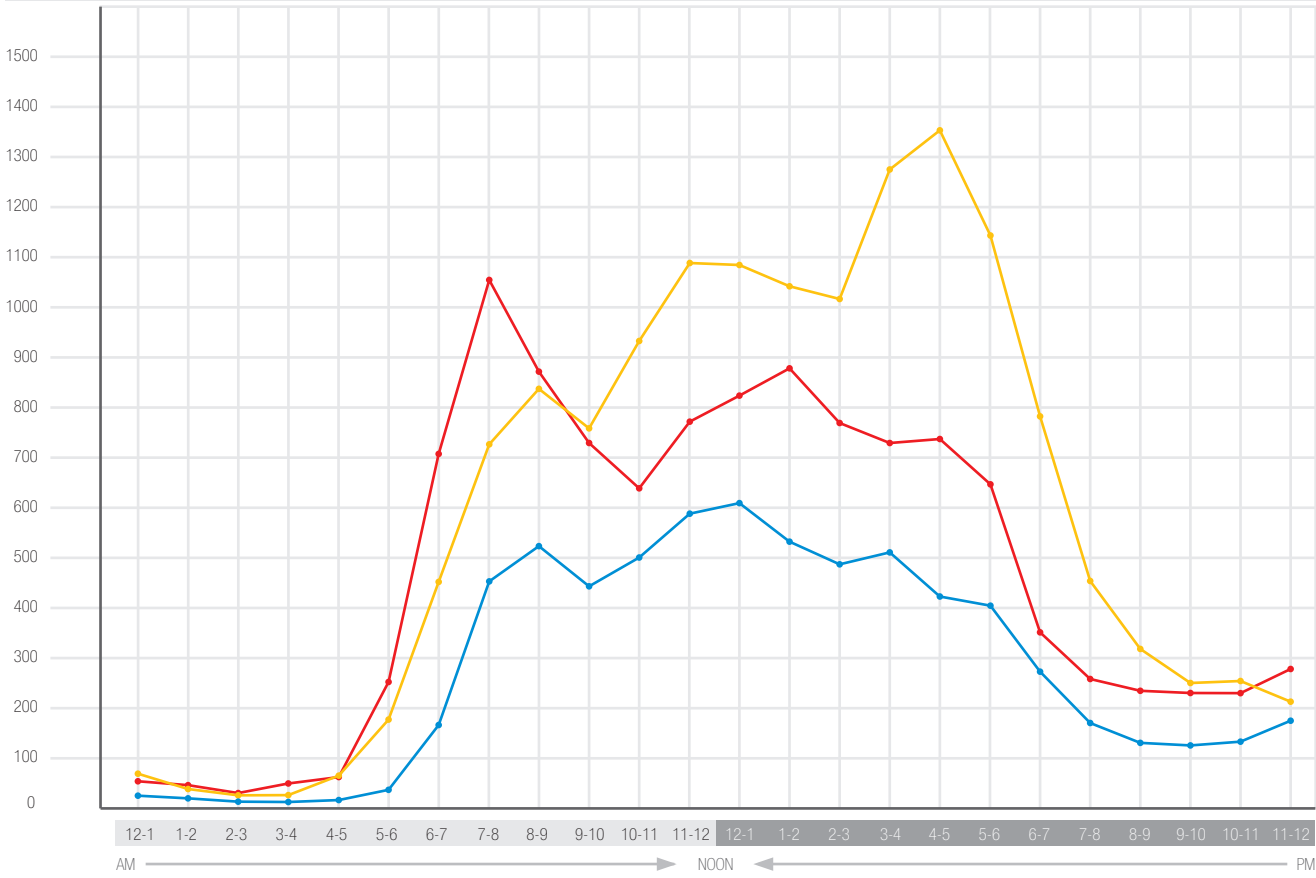


Intersection of Palafox & Garden Streets (Vehicular Count) — November, 2006 — 12:00AM through 11:59 PM

Intersection Totals 140 106 84 105 146 461 1335 2245 2237 1940 2077 2454 2517 2466 2285 2506 2518 2204 1415 904 690 598 627 671 **30,860 total**

MAP KEY

- Westbound
- Eastbound
- Southbound



Time	APPROACH				Intersection Total
	Westbound	Eastbound	Northbound	Southbound	
12:00 - 12:59	53	61		26	140
1:00 - 1:59	45	40		21	106
2:00 - 2:59	37	33		14	84
3:00 - 3:59	56	34		15	105
4:00 - 4:59	62	69		15	146
5:00 - 5:59	243	181		37	461
6:00 - 6:59	705	461		169	1335
7:00 - 7:59	1064	725		456	2245
8:00 - 8:59	878	830		529	2237
9:00 - 9:59	729	758		453	1940
10:00 - 10:59	640	938		499	2077
11:00 - 11:59	777	1090		587	2454
12:00 - 12:59	816	1089		612	2517
1:00 - 1:59	885	1042		539	2466
2:00 - 2:59	772	1019		494	2285
3:00 - 3:59	726	1275		505	2506
4:00 - 4:59	732	1353		433	2518
5:00 - 5:59	651	1146		407	2204
6:00 - 6:59	361	782		272	1415
7:00 - 7:59	267	465		172	904
8:00 - 8:59	238	316		136	690
9:00 - 9:59	227	248		123	598
10:00 - 10:59	226	266		135	627
11:00 - 11:59	286	211		174	671
TOTAL					30,860

