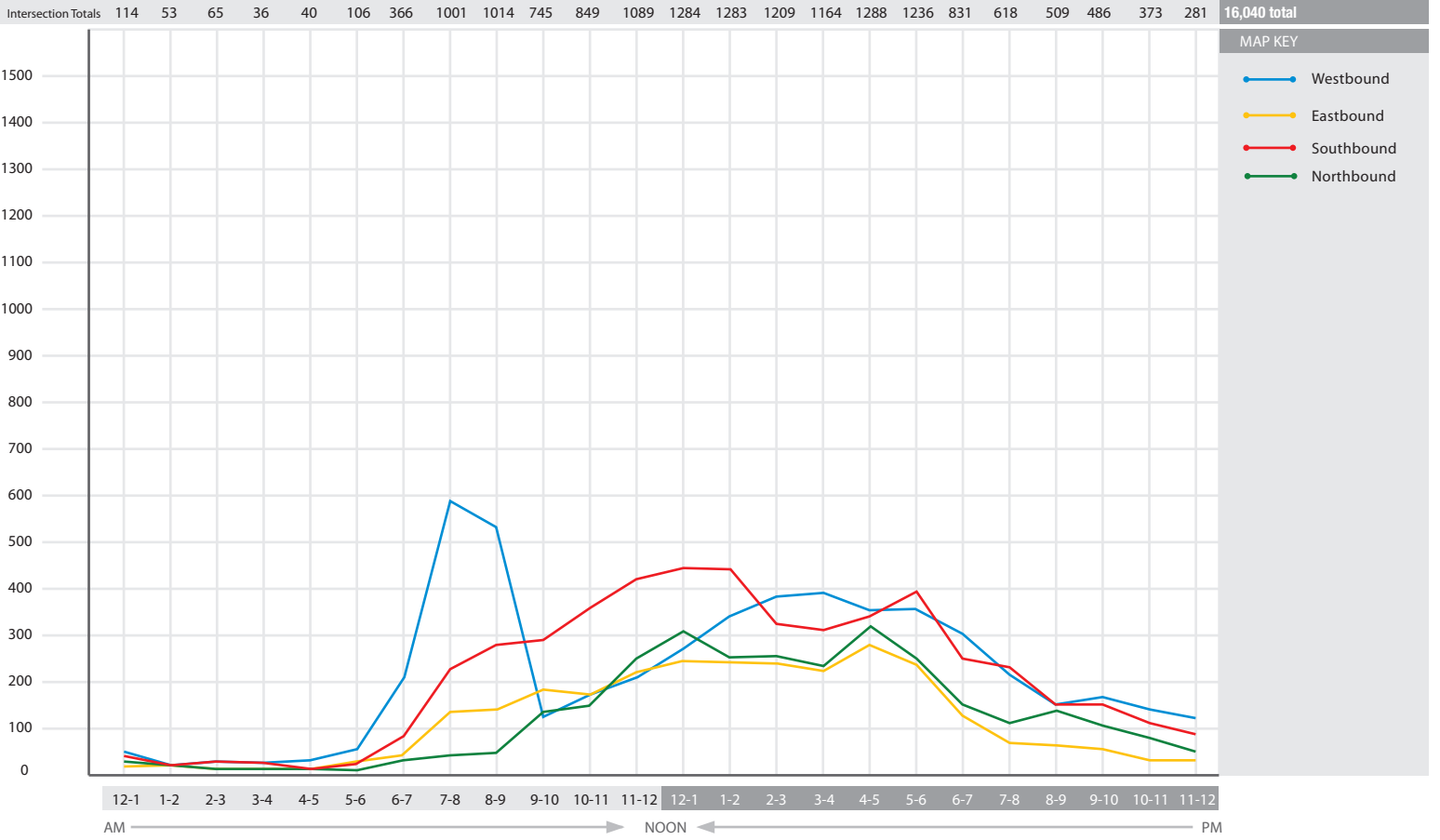
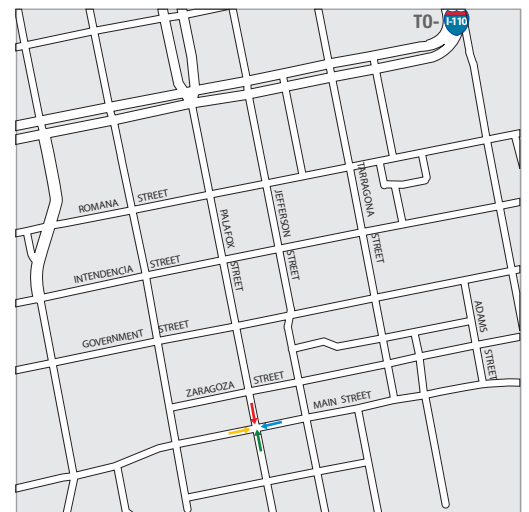


# Intersection of Palafox & Main Streets (Vehicular Count) — November, 2010 — 12:00AM through 11:59 PM



Time	APPROACH				Intersection Total
	Westbound	Eastbound	Northbound	Southbound	
12:00 - 12:59	47	7	25	35	114
1:00 - 1:59	14	5	9	25	53
2:00 - 2:59	20	4	7	34	65
3:00 - 3:59	16	3	2	15	36
4:00 - 4:59	22	4	4	10	40
5:00 - 5:59	67	23	2	14	106
6:00 - 6:59	206	57	23	80	366
7:00 - 7:59	592	139	38	232	1001
8:00 - 8:59	541	147	53	273	1014
9:00 - 9:59	125	196	137	287	745
10:00 - 10:59	170	163	148	368	849
11:00 - 11:59	203	224	252	410	1089
12:00 - 12:59	273	246	301	464	1284
1:00 - 1:59	347	236	244	456	1283
2:00 - 2:59	383	232	266	328	1209
3:00 - 3:59	394	218	242	310	1164
4:00 - 4:59	349	275	319	345	1288
5:00 - 5:59	353	237	248	398	1236
6:00 - 6:59	300	120	150	261	831
7:00 - 7:59	213	68	106	231	618
8:00 - 8:59	152	61	144	152	509
9:00 - 9:59	182	51	101	152	486
10:00 - 10:59	144	23	94	112	373
11:00 - 11:59	114	22	52	93	281
<b>TOTAL</b>	<b>5,227</b>	<b>2,761</b>	<b>2,967</b>	<b>5,085</b>	<b>16,040</b>

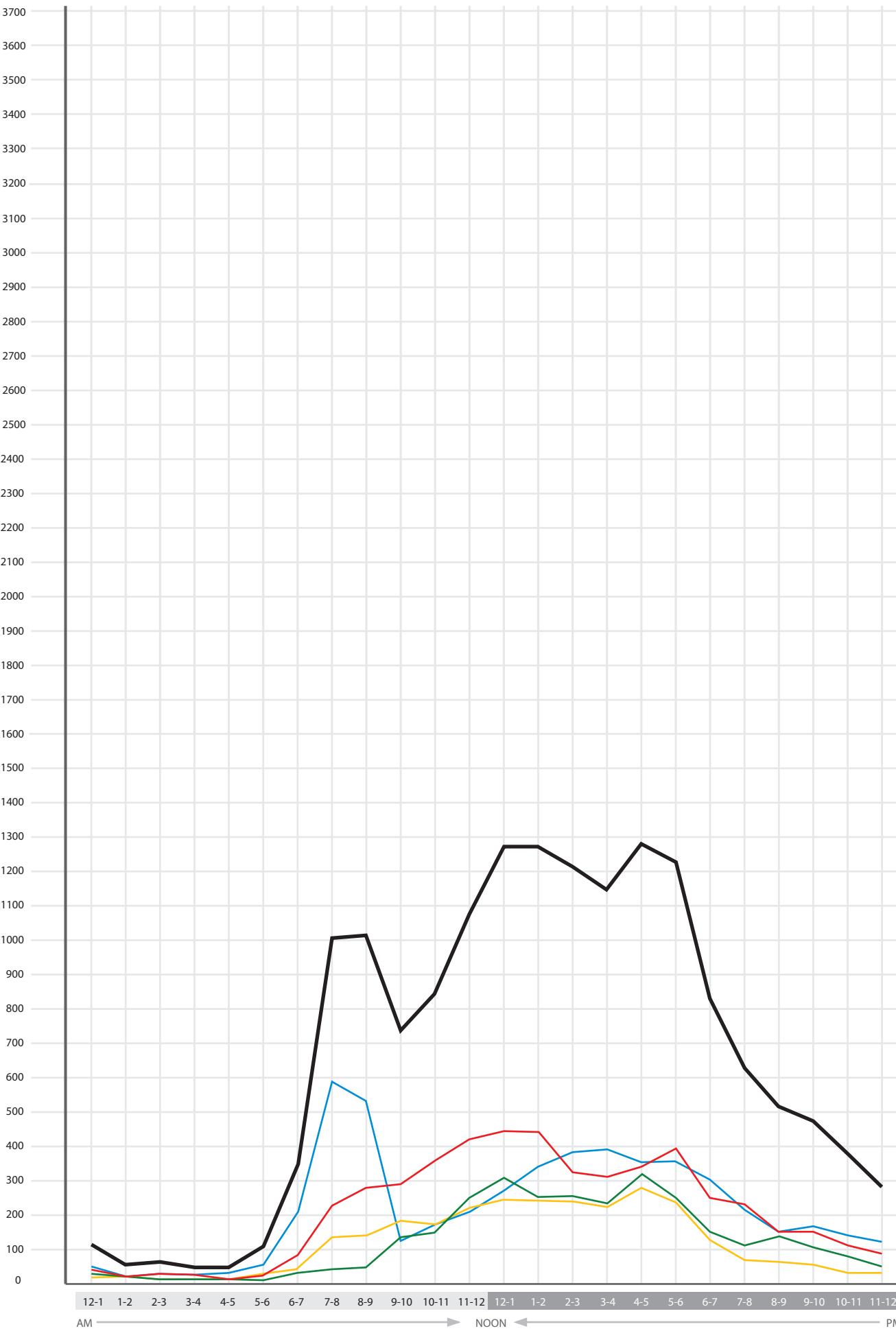


# Intersection of Palafox & Main Streets (Vehicular Count) — November, 2010 — 12:00AM through 11:59 PM

Intersection Totals 114 53 65 36 40 106 366 1001 1014 745 849 1089 1284 1283 1209 1164 1288 1236 831 618 509 486 373 281 **16,040 total**

MAP KEY

- Westbound
- Eastbound
- Southbound
- Northbound
- Total For Intersection



12-1 1-2 2-3 3-4 4-5 5-6 6-7 7-8 8-9 9-10 10-11 11-12 12-1 1-2 2-3 3-4 4-5 5-6 6-7 7-8 8-9 9-10 10-11 11-12  
 AM —————> NOON <———— PM